

"Net" Worth of Fishers of Men

Christians have enormous financial resources, which they could use to spread the gospel, feed the poor and fight for the cause of justice in the world.

Jesus called his disciples to re-orient their thinking from "net worth" to "net" casting. This includes using our financial resources for our assigned purpose:

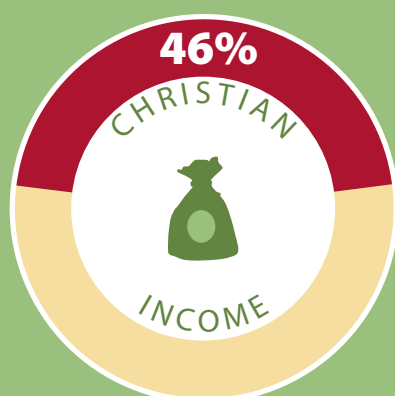
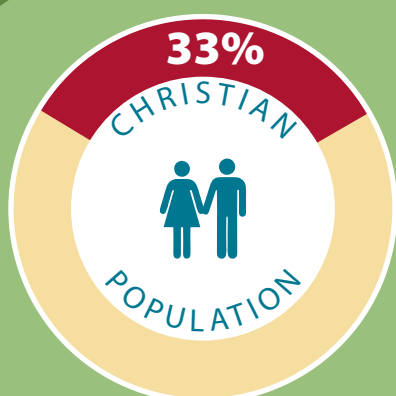
Follow me and I will make you fishers of men. (Matt 4:19 ESV)

Potential For Giving

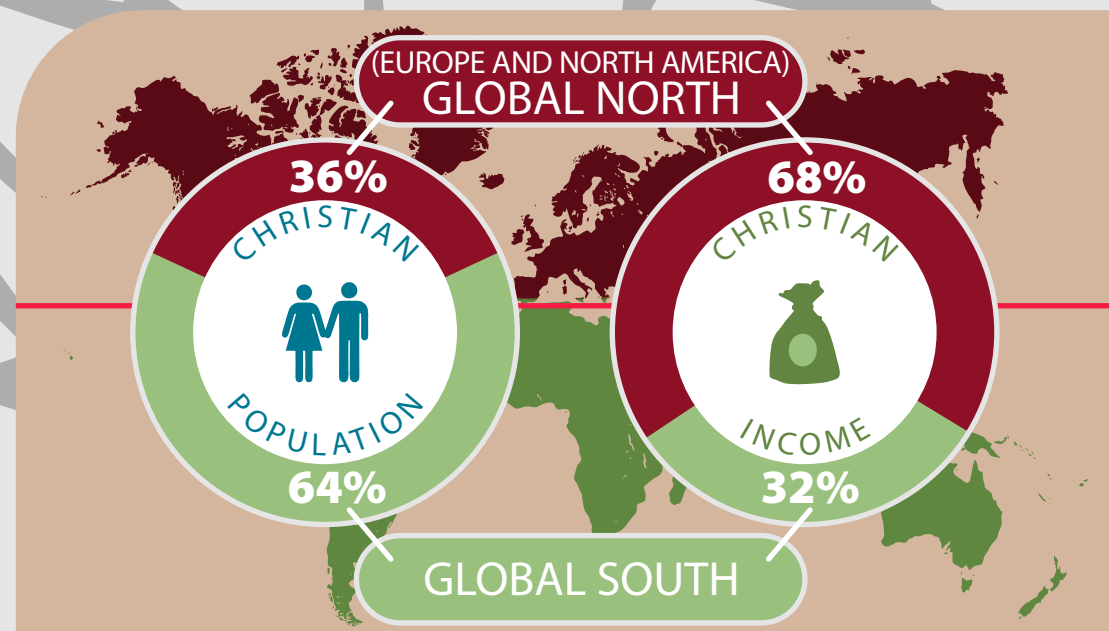
Christian income is concentrated in the wealthiest regions of the world — Europe, North America and part of Asia.

Middle and upper class Christians are increasing in number in some developing countries.

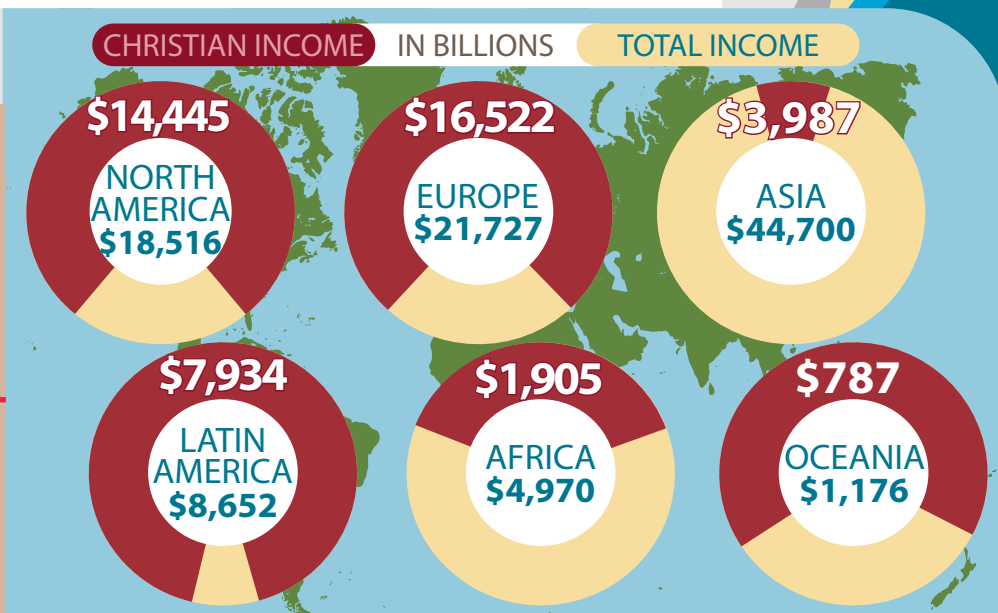
Christian GNI per capita = \$18,841 while Global GNI per capita = \$13,617 (GNI=Gross National income)



CHRISTIANS AS PERCENT OF WORLD



GLOBAL DISTRIBUTION OF CHRISTIANS



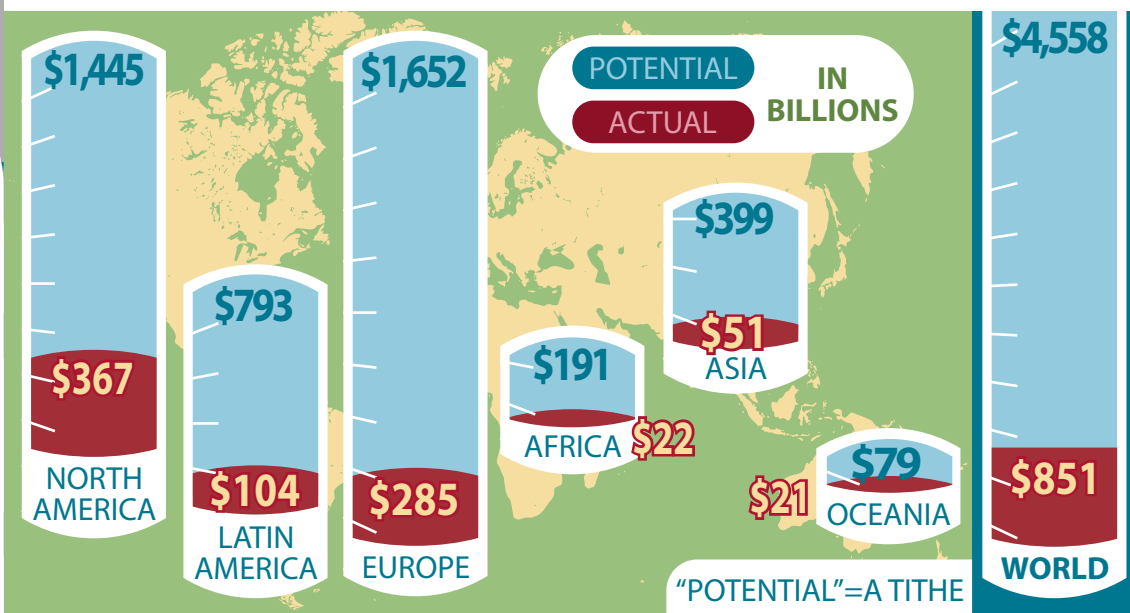
CHRISTIAN INCOME VS TOTAL INCOME

Actual Giving

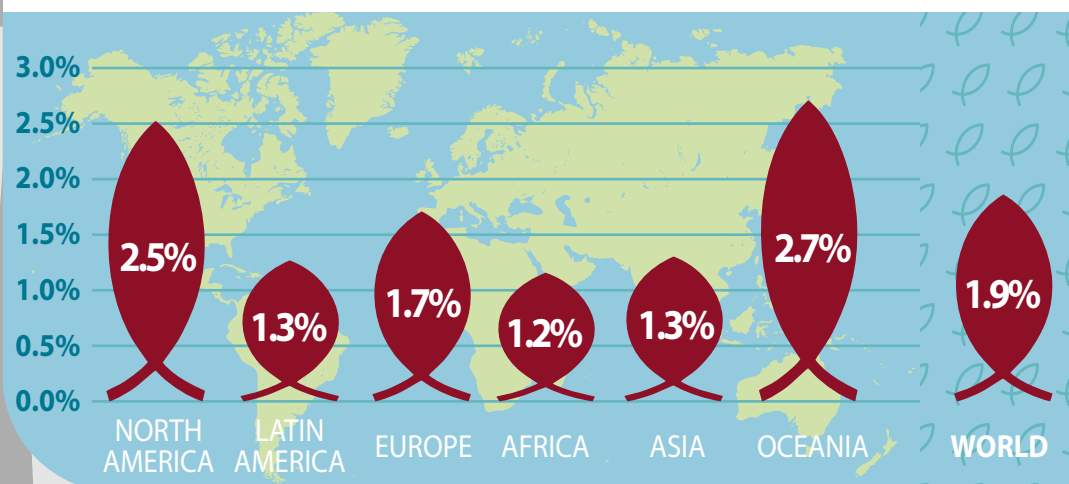


"The last part of a man to be converted is his wallet."
John Wesley

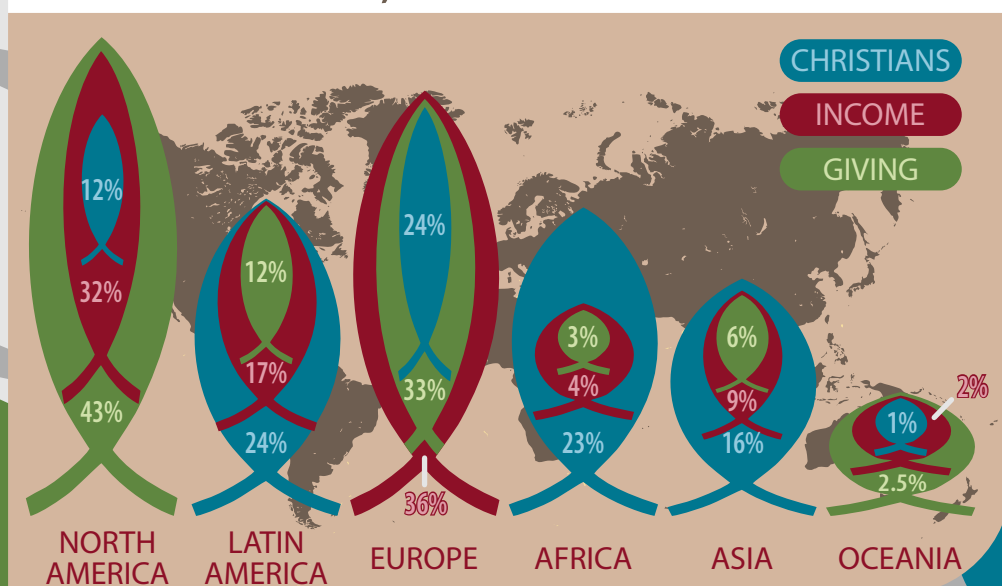
POTENTIAL vs ACTUAL CHRISTIAN GIVING



GIVING AS PERCENT OF INCOME



CHRISTIANS AS PERCENT OF POPULATION, INCOME AND GIVING



CASTING OUR NETS FURTHER

Being so overwhelmed by God's grace that we overflow into giving.

Being transformed from a consumer mentality to a fishing mentality; keeping up with Jesus instead of the Joneses.

Practicing systematic generosity — disciplined tithing and above-and-beyond gifts as God guides.

Making small adjustments: The \$100 spent on monthly coffee drinks could instead provide legal help for a woman rescued from sex trafficking.

For more data like these on the global Christian community, please visit the Center for the Study of Global Christianity at Gordon-Conwell Theological Seminary at www.globalchristianity.org

Sources and other explanatory notes at www.missiographics.com/christian-finance

Sponsored by:



To find more infographics from GMI visit www.missiographics.com



CAPIN CROUSE LLP

Empowering Nonprofits™